

KIL

Primary Switch

- CLOSED
- OPEN

Recloser

- CLOSED
- OPEN

- Substations
- Fuses

Mainline

- Single Phase
- Two Phase
- Three Phase

4.4 Miles

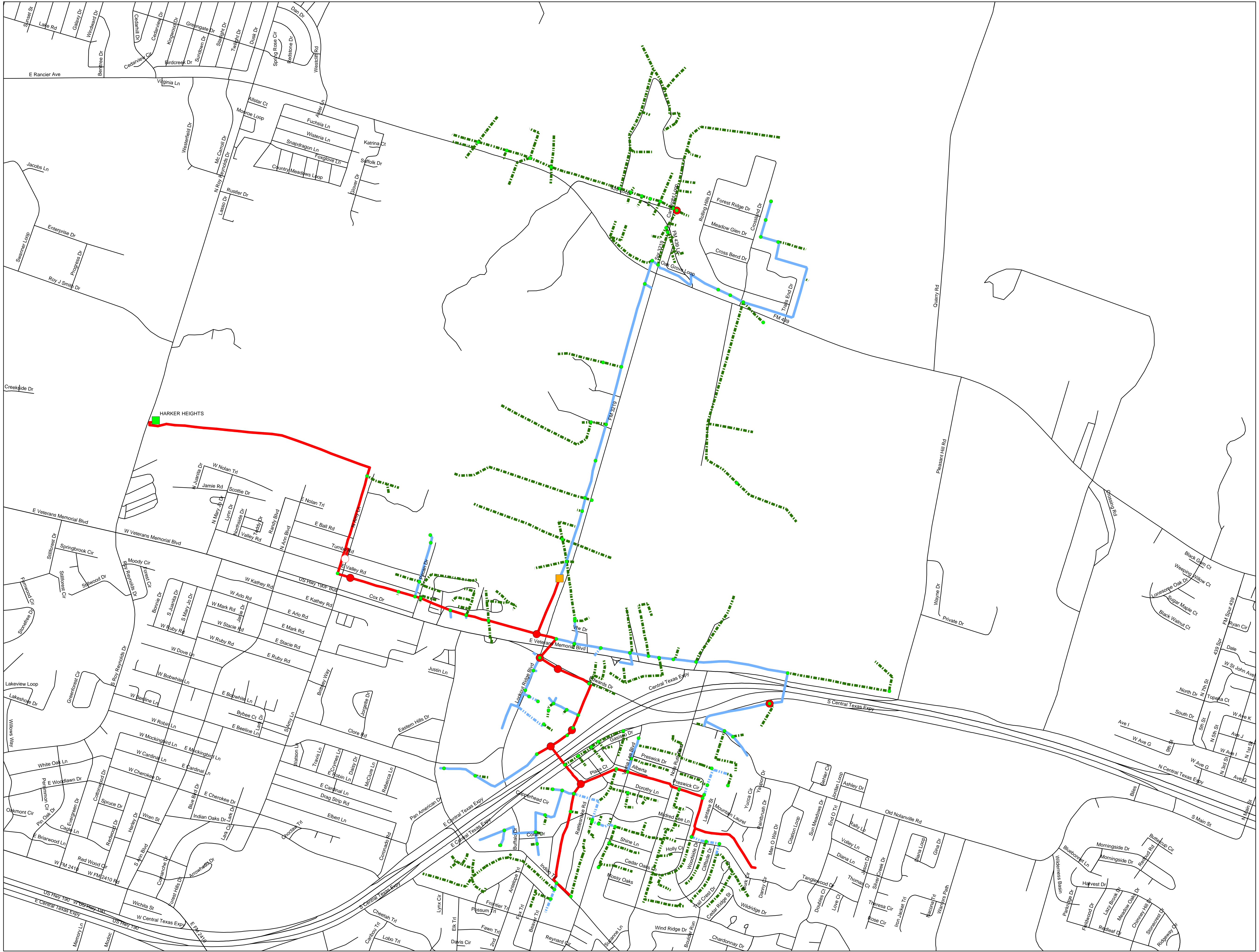
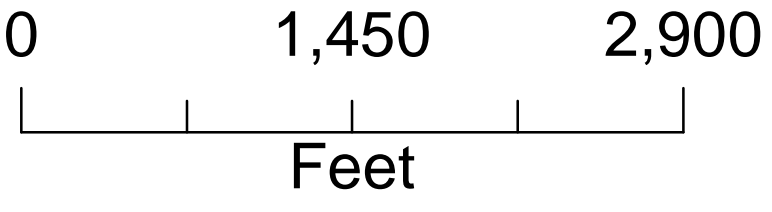
Multiphase Non-Mainline

- Two Phase
- Three Phase

6.9 Miles

Single Phase

17.8 Miles



Maps, drawings, and electronic data (products) are created for the internal purposes of ONCOR Electric Delivery Company LLC with no implication of suitability or fitness for the intended use of the recipient. ONCOR will make good faith efforts to provide products that are free from error, but does not warrant the accuracy or quality of such products. The locations shown are approximations and are not intended to show exact locations. Products provided to other parties by ONCOR are for the internal use of the recipient, and the recipient agrees not to duplicate or distribute the products or any portion of the products to third parties without the prior written permission of ONCOR. The recipient further agrees to hold harmless and indemnify ONCOR against all claims, costs, expenses and damages resulting from or predicated upon strict liability for personal injuries, death or property damage, on account of any defects in the property provided hereunder.

There are both underground and overhead facilities in this area. So before you dig, call 811 or go to www.texas811.org.